

Setting Compatibility View for Internet Explorer

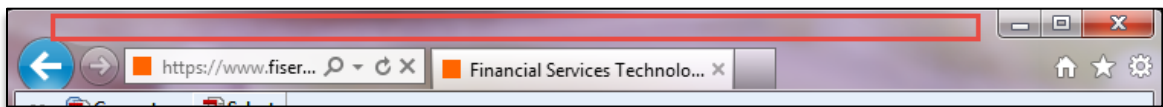
Use this procedure to activate the menu bar, and then add secureinternetbank.com to your compatibility view settings.

Note:

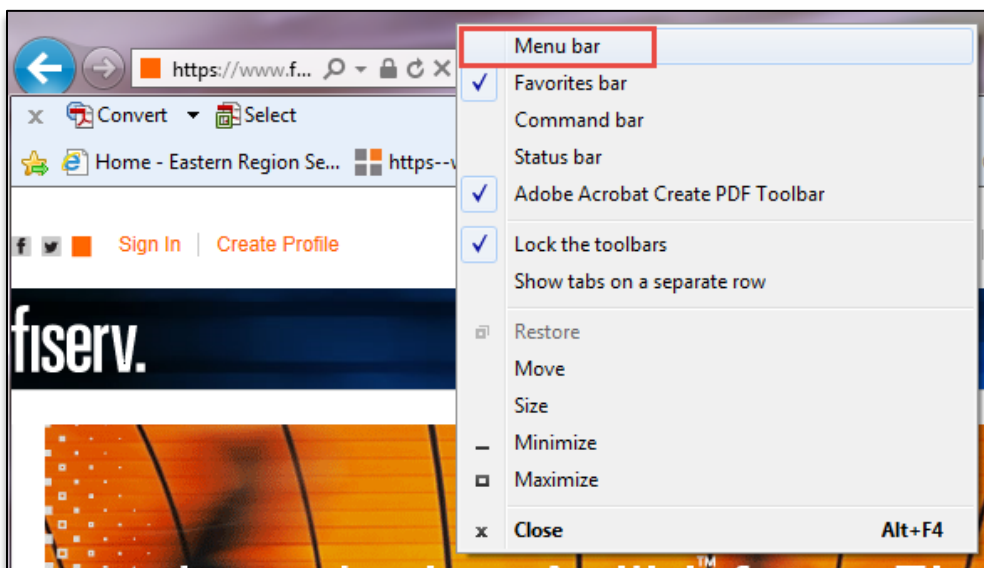
Adding secureinternetbank.com to your compatibility view will enable compatibility view for Online Banking.

To set compatibility view for Internet Explorer:

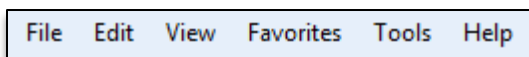
1. From your desktop, open **Internet Explorer**.
2. Opposite-click anywhere in the space at the top of the window, above the address bar. The different toolbar options display.



3. Select **Menu bar** if it is not selected already.



4. The horizontal Menu bar displays.



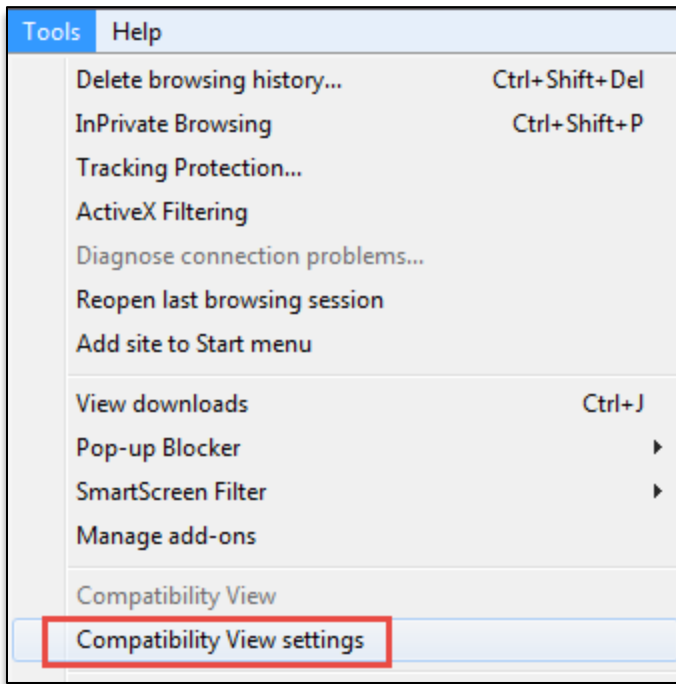
5. Navigate to your Online Banking **Log In** screen.

Note:

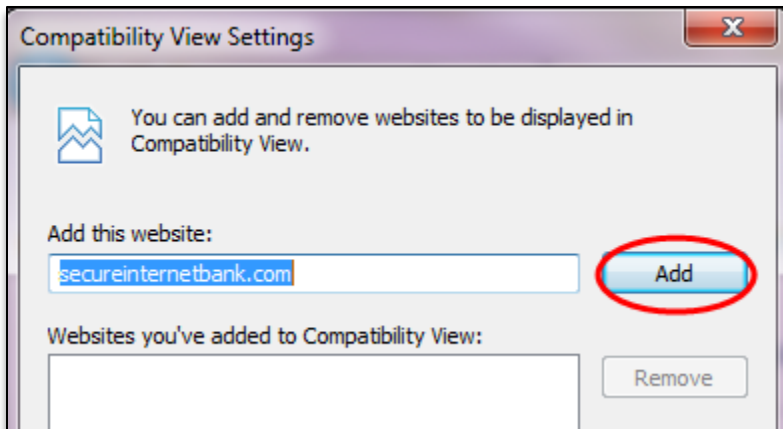
The URL should begin with web15.secureinternetbank.com.

Setting Compatibility View for Internet Explorer

6. Select **Compatibility View Settings** from the Tools menu.



7. Click **Add** from the Compatibility View Settings window. Secureinternetbank.com will move from Add this website to Websites you've added to Compatibility View.



8. Click **Close**.